

WELCOME

Public Open House Meeting #4

October 12, 2022



Airport Master Plan Update

GOALS

Meet Aviation Demand

Meet FAA Design Standards

Prepare OLM for Future Development

Prepare OLM for Emerging Aviation Technologies

Continued Airport Self-sufficiency

PURPOSE

As defined by the Federal Aviation Administration (FAA), an **Airport Master Plan** is a comprehensive study of an airport that usually describes the short-, medium-, and long-term development plans to meet future aviation demand.

MASTER PLAN TASKS

Inventory
Forecasts
Facility Requirements

Alternatives
Airport Layout Plan
Capital Improvement Plan

SCHEDULE

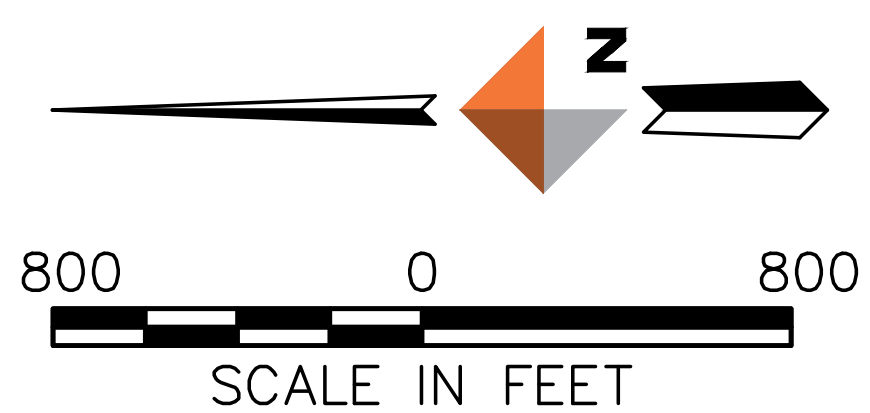


Airport Master Plan Update

PREFERRED DEVELOPMENT ALTERNATIVE

Legend

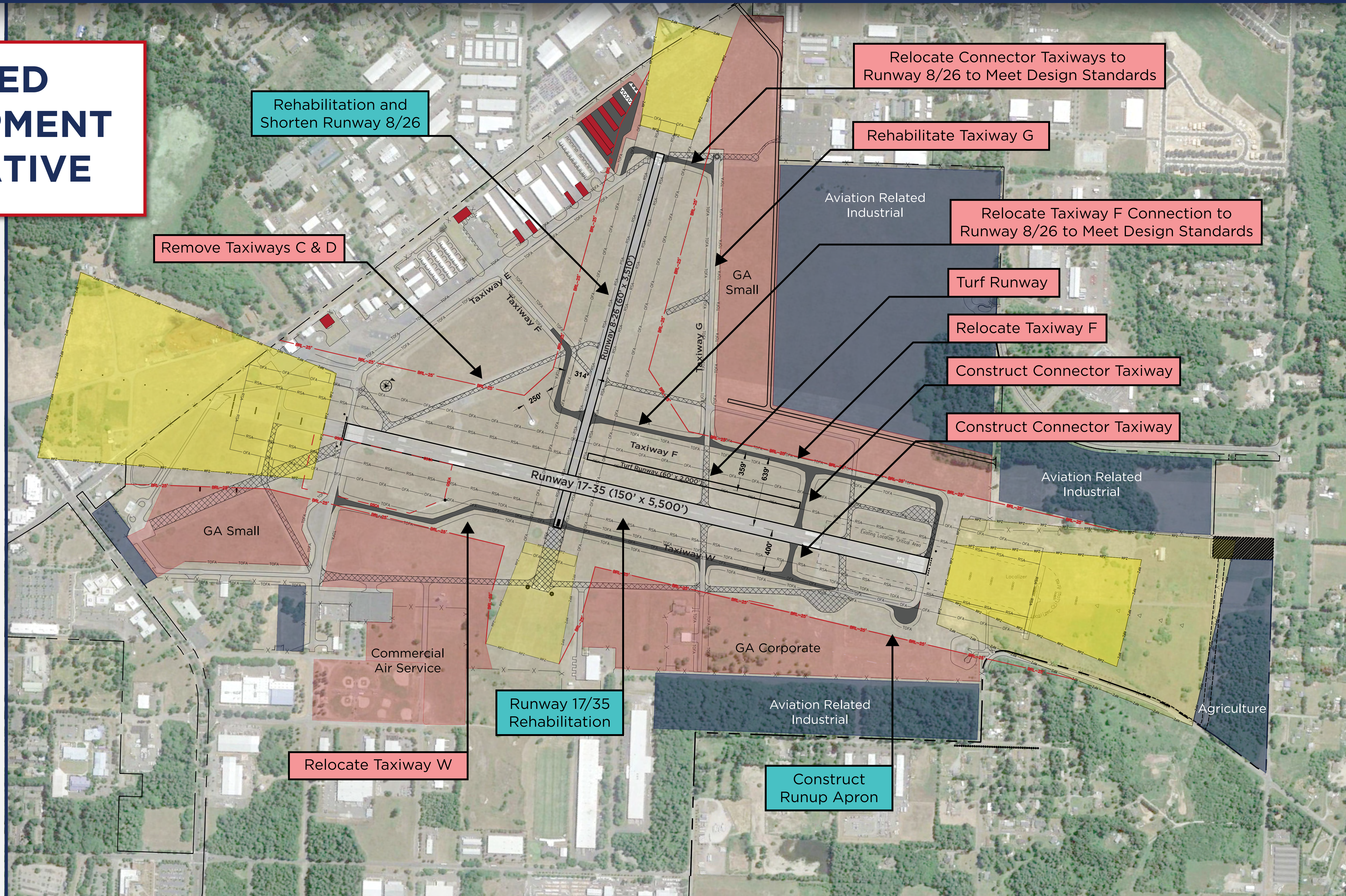
- Aviation Related Industrial / Ag.
- GA/Corporate/Commercial Service
- Runway Protection Zone
- Building Restriction Line (BRL)
- Proposed Taxiway Pavement
- Taxiway Pavement to Remain



Project Phasing

Near-Term
(2022-2025)

Mid-Term
(2026-2029)



PURPOSE

Preliminary evaluation of OLM's compatibility to meet FAA requirements for regional commercial service. Focused on what the airport can accommodate with regard to emerging aircraft. Funded by FAA outside of the CACC and WSDOT's aviation system plan. The Feasibility Study is a component of the master plan with forecasts, facility requirements, and alternatives evaluation.

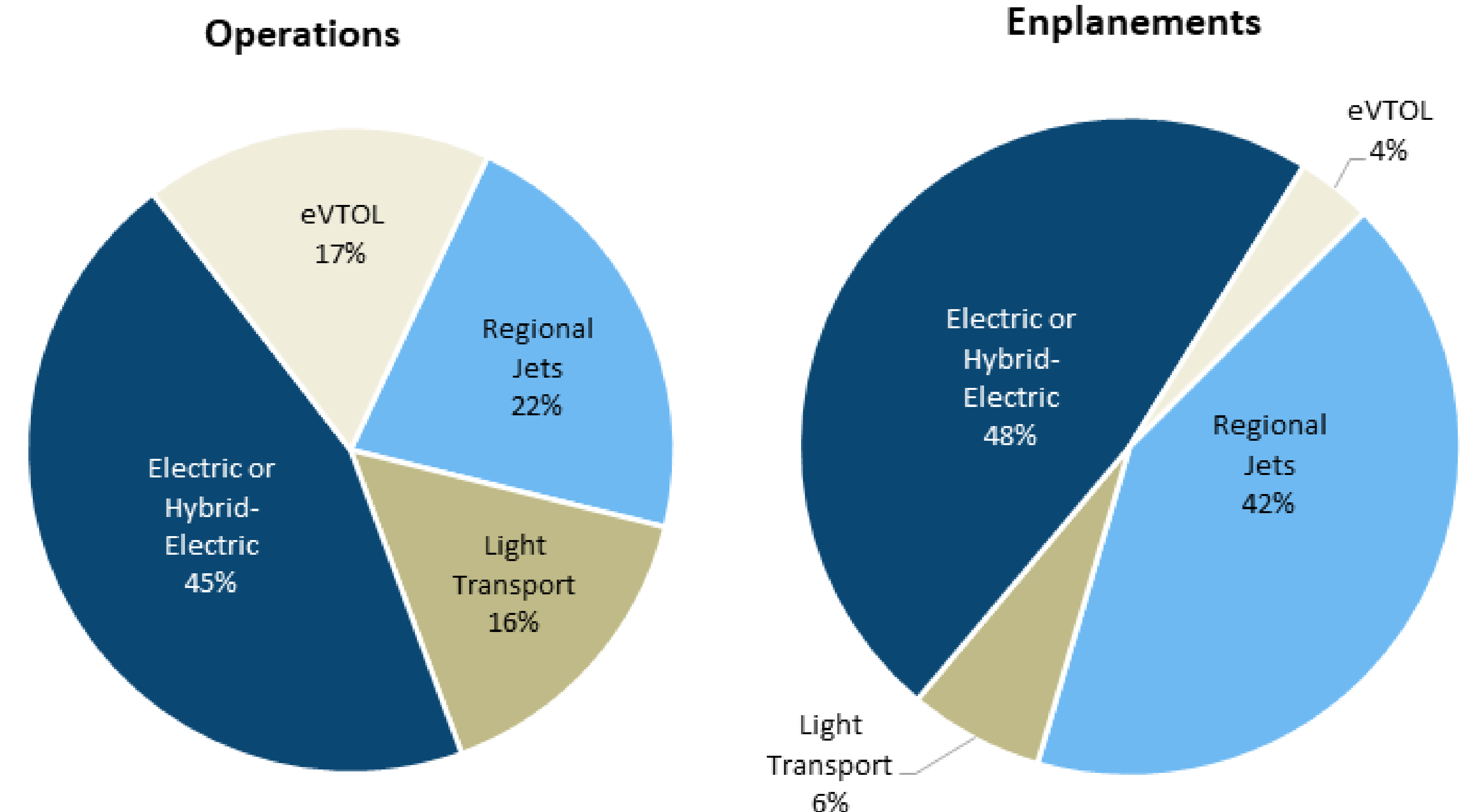
FORECAST ASSUMPTIONS

- Not forecasted to be a commercial hub
- Sustainable aviation will continue to grow
- Forecasts have an upper limit based on existing capacity
- Commercial activity not anticipated until after 2030 at the earliest
- Two primary elements: satellite service to a hub and point-to-point regional service

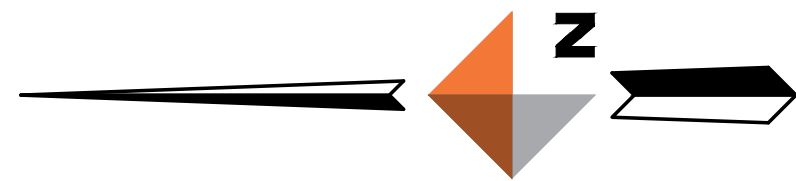
FORECASTS

Commercial Activity	2020	2025	2030	2035	2040
Enplanements					
Satellite Service (LAX)	0	0	0	34,816	119,171
Regional Service	0	0	0	144,282	164,621
Total	0	0	0	179,098	283,792
Operations (Arrivals and Departures)					
Satellite Service (LAX)	0	0	0	1,500	4,400
Regional Service	0	0	0	13,700	15,600
Total	0	0	0	15,200	20,000

Source: The Aviation Planning Group 2021, FAA Terminal Area Forecasts 2021, FlightRadar24.com 2021, Google Earth 2021, Puget Sound Regional Council 2019.



COMMERCIAL SERVICE DEVELOPMENT ALTERNATIVE



LEGEND		
DESCRIPTION	EXISTING (E)	ULTIMATE (U)
TAXIWAY / AIRFIELD DEVELOPMENT		
STRUCTURAL / FACILITIES (BUILDING)		
RUNWAY DEVELOPMENT		SAME
AIRPORT PROPERTY LINE (APL)		SAME
RUNWAY PROTECTION ZONE (RPZ)		
RUNWAY SAFETY AREA (RSA)		
RUNWAY OBJECT FREE AREA (ROFA)		
TAXIWAY OBJECT FREE AREA (TOFA)		
EASEMENT		
FUTURE REMOVAL		N/A
FENCE		

LEGEND		
DESCRIPTION	EXISTING (E)	ULTIMATE (U)
20' BUILDING RESTRICTION LINE (BRL)		
SURVEY MONUMENTS		SAME
AIRPORT REFERENCE POINT (ARP)		
AIRPORT BEACON		SAME
PRIMARY WIND CONE AND SEGMENTED CIRCLE		SAME
AIRCRAFT TIEDOWN		SAME
ASOS		SAME
CONTOURS		SAME
PAPI		SAME
THRESHOLD SITING SURFACE (TSS)		
DEPARTURE SURFACE		SAME

